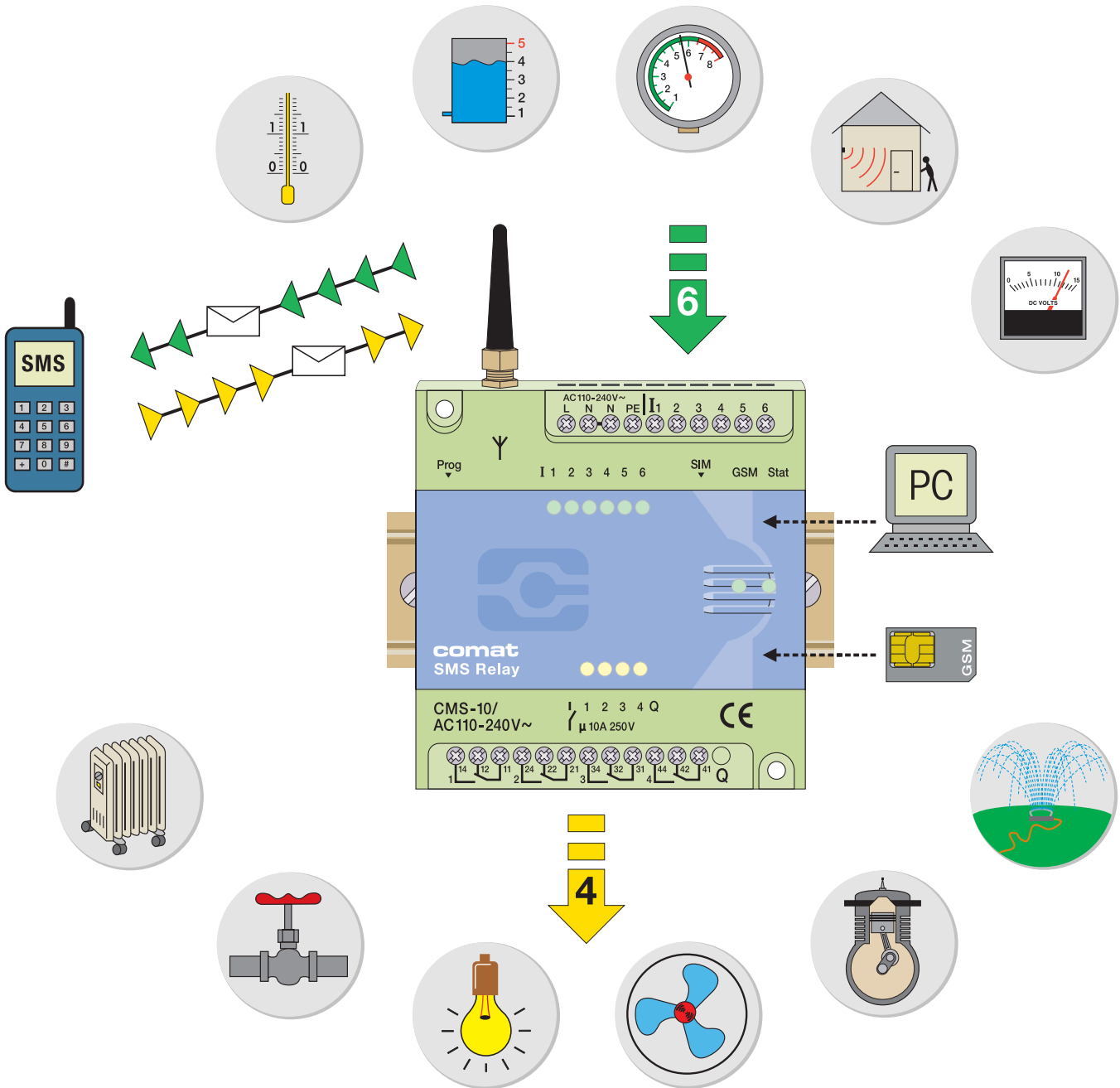


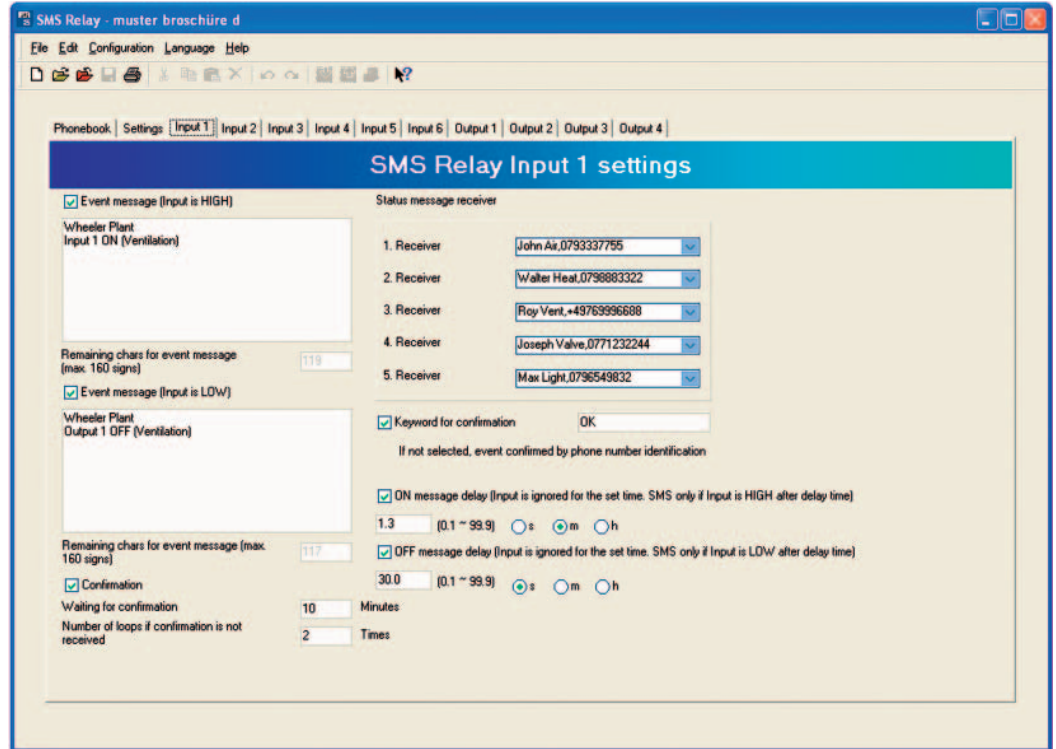
- ✓ Monitoring of all inputs and outputs with SMS messaging
- ✓ Remote control of outputs by SMS
- ✓ Sequential alert messaging to 5 different subscribers
- ✓ Easy configuration with PC and «FAST SMS SET»-up configuration software
- ✓ Power failure notification by SMS messaging
- ✓ Status change messages by SMS
- ✓ User defined message text

## Applications



**Monitoring Alerting, Controlling**  
**Alerting Controlling Monitoring**  
**Controlling Monitoring Alerting**

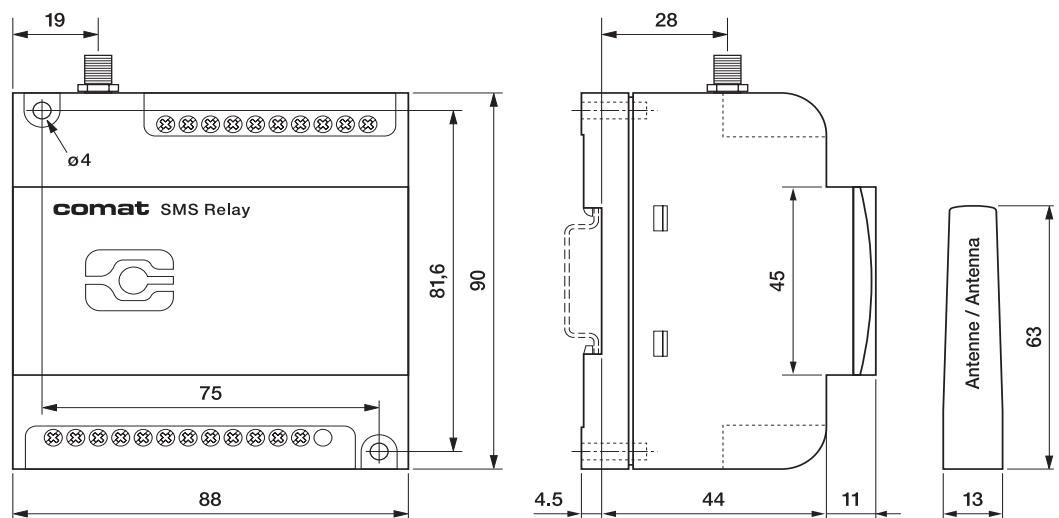
## Configuration software



## Technical Data's

Operating voltage	AC 110-240V~ 50/60Hz	DC 12-48V= ∇ max. 10%
Power consumption	8VA/6W	6W
Switching capacity	4x 10A 250V	
Temperature range	Tu: -25...+55° C Rel. humidity: 5...95% (non condensing) Protection IP20	
Inputs	6x digital trigger level 85V~	6x digital trigger level 9,5V=
Outputs	4x CO contacts	
Provider (Phone/Network)	User selectable (dependent on SIM card)	

## Dimensions

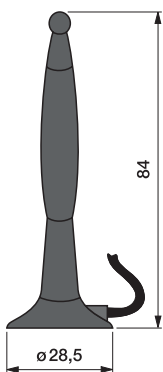


Installation according to DIN 43 880

## Order-Nr.

Type	Description	ELDAS-No.
<b>CMS-10/AC110-240V</b>	SMS Relay AC 110-240V Base unit only with small antenna (CMS-ANT)	505 747 500
<b>CMS-10/DC12-48V</b>	SMS Relay DC 12-48V Base unit only with small antenna (CMS-ANT)	505 747 531
<b>Kit consisting of:</b> A base unit with small antenna, programming cable, antenna with magnetic pod and 2.5 m cable, CD with «FAST SMS SET»-up programming software and operation manual.		
<b>CMS-10KIT/AC110-240V</b>	Installation kit complete (SMS Relay AC 110-240V)	505 747 800
<b>CMS-10KIT/DC12-48V</b>	Installation kit complete (SMS Relay DC 12-48V)	505 747 831
<b>Zubehör</b>		
<b>CMS-RS232</b>	SMS Relay Programming Cable RS232	505 790 010
<b>CMS-USB</b>	USB-RS232 Interface connector (including driver CD)	505 790 011
<b>CMS-ANT</b>	Small spare antenna for base unit, 63 mm long	505 790 012
<b>CMS-ANT-MAG/2.5M</b>	Antenna with magnetic pod and 2.5 m antenna cable	505 790 013
<b>CMS-ANT-SPEZ/5M</b>	External antenna with 5 m antenna cable	505 790 014
<b>CMS-ANT-KAB/5M</b>	Antenna cable 5 m (extension)	
<b>CMS-ANT-KAB/10M</b>	Antenna cable 10 m (extension)	
<b>CMS-ANT-ADAPT</b>	Adaptor FME to SMA plug	505 790 015
<b>CMS-CAP</b>	Device cover (spare)	
<b>CMS-CD</b>	CD with FAST SMS SET -up programming software and manual	

## Installation note



Antenna with magnetic pod and 2.5 m antenna cable.

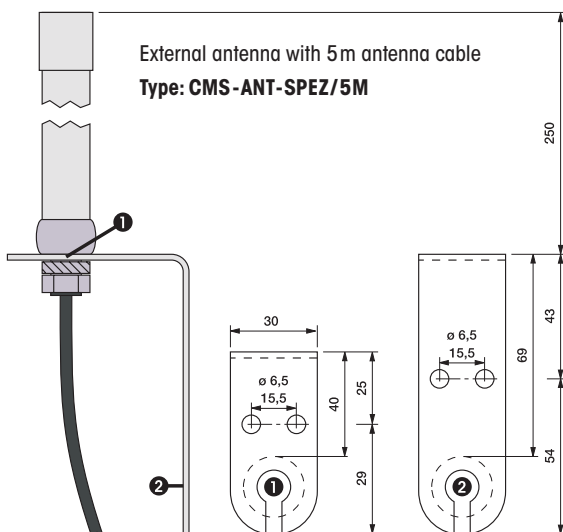
Type: **CMS-ANT-MAG/2.5M**

The Base unit device is delivered fully operational and includes the small aerial CMS-ANT. Before installation, the final location of installation must be taken into consideration.

For installation inside a control panel, the small device aerial may not be suitable and needs to be replaced by the antenna with magnetic pod (CMS-ANT-MAG/2.5M) or by the external antenna (CMS-ANT-SPEZ/5M).

These two antennae provide considerably better results and improve communication with the mobile network.

Please ask our product specialists if you require any support.



External antenna with 5 m antenna cable

Type: **CMS-ANT-SPEZ/5M**