

Single-phase AC Surge Protector Module

DU40S



Citel's DU40S line of AC surge protection modules are designed for OEM applications such as lighting panels, small electrical distribution panels, control & instrumentation equipment. With its single pole design, it offers many options when configuring integral surge protection. The compact, low profile module is DIN rail mountable and comes with a 10-year warranty.

Applications

- Lighting panels
- Control panels feeding VSDs, PLCs, etc.
- UPS, MRI, Process equipment
- Irrigation systems
- Surveillance systems

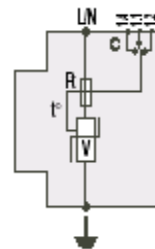
Standards & Guidelines

UL 1449 2nd Edition	USA
IEC 61643-11	International
ANSI/IEEE C62.41	USA
NFC 61740-95	France
VDE0675-6	Germany
CSA C22.2	Canada
CE Marked	European

OEM AC Surge Protection

- 40kA transient amps protection (8/20 μ s)
- Compact design, 35mm DIN Rail mounting
- Thermal disconnect system
- Fault indicator and remote alarm.
- 10-Year warranty
- Available in NEMA 4/12 enclosure

Electrical Diagram



V: High-energy varistor
 Ft: Thermal fuse
 C: Remote signaling contact
 t°: Thermal disconnection
 MI: Disconnection indicator

Specifications

Citel Model DU40S	-120	-230	-400
System Voltage	120/208V 120/240V 120V	220/380V 240/415V 240V	277/480V 347/600V
MCOV	150V	250V	440V
I _{peak} 8/20 μ s	40kA	40kA	40kA
ClampV @ 3kA	425V	645V	1095V
ClampV @ 500A	395V	685V	975V
Diagnostics	Visual fault indicator and remote alarm.		
Housing Materials	Polycarbonate UL94-V0		
Operating Temperature	-40°C to +85°C		
Operating Altitude	13,000 ft (400m)		
Connection Method	Parallel		
Protection Type	MOV based		
Connection	screw terminals, 1x 50mm ²		
Protection Modes	L-N; L-G; N-G; L-L		
Dimensions	90Hx17.8Wx66.4D (in mm)		