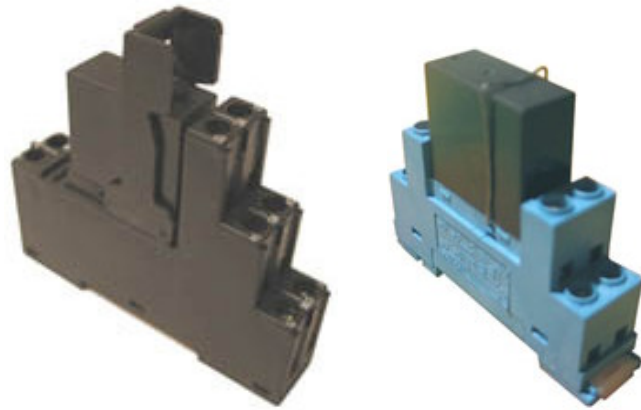
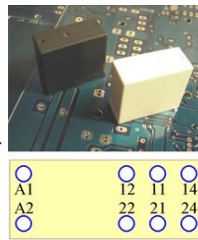


Features

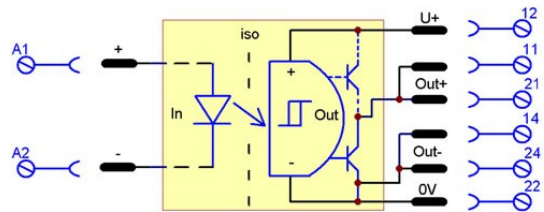
- A range of super fast active optocouplers in **Electrobrick** plug-and-play enclosures (same shape as the common industrial relays).
- Compact, flexible and easily exchanged. Delivered with a DIN rail socket, with quality screw terminals (standard or low-cost).
- Available without socket, for direct PCB mounting or for customer's choice of socket.
- For data transmission, pulse isolation, level shifting
- As amplifier, sine/square wave converter, driver for capacitive loads (eg. MOSFET / IGBT)
- For prox. switches: PNP/NPN booster or inverter
- Special input voltages on request, without extra cost (min. 25 pieces)
- With high isolation voltage and distance.
- Well suited for switching inductive loads. The outputs are overvoltage protected (within the energy limits) and catch the inductive spikes.
- On request: other control voltage (eg. 110V), lower supply voltage (eg. Un=5V, 12V), for open collector version: high voltage output switch, etc.



standard version low-cost version
Optocoupler modules fixed on DIN rail sockets



Modules without sockets (bottom view)



Block diagram (O6... include dashed diagram)

Available accessories

- All sockets: jumpers
- Standard sockets: labels and LED modules

Technical data (Ta = 25°C)

	low power	mid. power	high power	very high power
Output	100mA DC output	1A DC output	5A DC output	10A DC output
Output type	Push-Pull, non inv.	Open Collector, inv.	Open Collector, inv.	Open Collector, inv.
Max. switching voltage	30VDC	to be defined	30VDC	to be defined
Max. switching current (res.load)	100mA	-	5A	-
Max. transient current	0.5A/ 0.1ms	-	40A/ 0.1ms	-
Output voltage drop (w/o socket)	"0"<0.3V, "1">U+ -2V	-	<0.2V	-
Overvoltage voltage protection	push-pull to U+ / 0V	-	yes (~40V)	-
Max. energy of single overvoltage spike	-	-	130mJ	-
Max. switching frequency (fmax) *	2.0 MHz	-	200kHz	-
* resistive load, I=Imax/2, DC=50%				
Max. rise / fall time (ton / toff)	15ns / 30ns	-	50ns / 110ns	-
Input				
Polarity protection	yes	-	yes	-
Control voltage tolerance	Un±20%	-	Un±20%	-
Max. control input current (at Uc)	10mA	-	10mA	-
Sure on level	80% of Uc	-	80% of Uc	-
Sure off level	10% of Uc	-	10% of Uc	-
Supply (U+ / 0V)				
Sup. voltage / max. current (Un=24V)	15-30VDC/ 15mA	-	15-30VDC/ 15mA	-
General data				
Propagation delay input / output (typical)	300ns	-	400ns	-
Input / output dielectric strength		3.75kV rms, 3mm		
Operating temperature range		-20°C to +50°C		
Max. wire cross section (socket)		6mm ² (AWG10)		
Socket max. size L x W x H		Standard ver.: 16 x 82.5 x 72mm,	Low-cost ver.: 16 x 68.5 x 50.5mm	
Module max. size LxWxH (w/o pins)		29x12.8x25.5mm		
Module pins	gold plated, length ~5mm, 0-1A ver.: 0.64x0.64mm,	5-10A ver.: power pins=0.6x1.5mm		
PCB hole size		all versions: 1.1mm, 5-10A versions: 1.6mm for the 4 power pins		

Control voltage (Uc)

Order numbers**:	5VDC (TTL)	EB-O6-5VDC	to be defined	EB-O8-5VDC	to be defined
	12VDC	EB-O6-12VDC		EB-O8-12VDC	
	24VDC	EB-O6-24VDC		EB-O8-24VDC	
	48VDC	EB-O6-48VDC		EB-O8-48VDC	

** **Sockets:** O1..= on standard DIN rail socket, O1E..= with low-cost socket included, O1M..= only module without socket