

Available from :
 GBU Electrotech/Woertz-USA
 151 Discovery Drive Unit 112
 Colmar, PA 18915
 Email: sales@gbuelectrotech.com
 Website: www.gbuelectrotech.com

4 fuses with supervision and alarm output

Features

- Four 10A* solid fuse holders on a compact, DIN rail (15 and 35mm) mountable module, with quality screw terminals
- Combined fuse holders for 5x20mm and / or 6.3x32mm fuses
- Fuses isolated from each other and supply
- Fuse states are shown with LEDs
- A common alarm relay is activated when a fuse is blown
- Power relay or signal relay contacts available
- Version with integrated load resistors available (when supervision of fuses is necessary without connected loads)
- Low leakage current
- Wide supply and fuse voltage ranges
- Supply and fuse voltage can be DC and / or AC (can well be used in a 24VAC only, power supply free application)
- Fuse protection covers when high voltage
- Can also be used (without fuses) as an isolated **LOGICAL OR UNIT** with LED indication and isolated output contacts
- **On request:**
 - other supply or fuse voltage (eg. 5V, 12V)
 - other temp. range (eg. from -40°C)
 - low-cost version (only for DC)
 - fast version (eg. for switching on a redundant power supply if fuse of main supply blows)



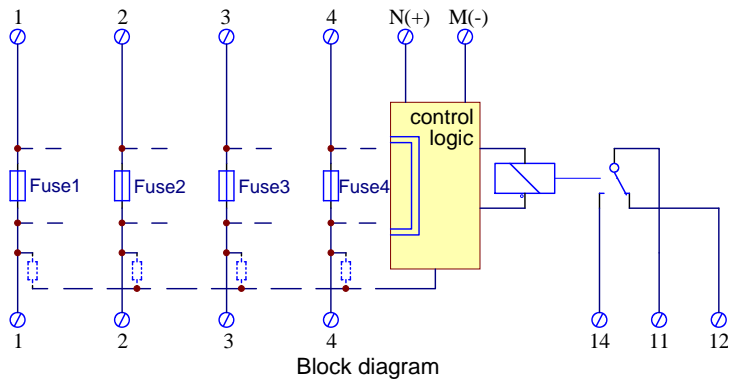
standard fuse module



fuse cover **FC1-B**



signal relay version



Technical data (Ta = 23°C)

Fuses

Required voltage over broken fuse for detection
 Leakage resistance over broken fuse
 Max. fuse current

Standard voltage version

6-60V AC/DC
 min. 15kOhm
 10A*

High voltage version

70-250V AC/DC
 min. 400kOhm
 10A*

* Fuse holders are VDE approved for 10A and UL/CSA approved for 16A (standards: IEC60127-6, UL512, CSA C22.2)
 * Max. power acceptance of fuse holder (Current * Voltage over fuse): **4W** (10A) @ Ta=23°C, derated to **1.3W** @ Ta=55°C
 * If high current is used, good air circulation and no fuse covers are recommended.

"R"-version: Load resistors (dotted in the block diagram) min. 20kOhm min. 200kOhm
 Isolation fuse-fuse / fuse-supply (M,N) 1mm creepage distance (max. 250V between not touchable conductors)

Supply, Relay

Supply voltage (M,N), low supply voltage version 18-30VAC/DC 18-30VAC/DC
 Supply voltage (M,N), high supply voltage version - in development
 Supply current when relay active (M,N=24V) typically <10mA typically <10mA
 Supply current when relay active (M,N=230VAC) - in development
 Power C relay contacts **min.** 10V / 5mA, **max.** AC1: 1.5kVA= 6A/250VAC, DC1: 3A/30VDC, 0.2A/220VDC
 Signal C relay contacts **min.** 10mV / 10µA, **max.** 62.6VA (0.5A/125VAC res. load), 60W (2A/30VDC res. load)
 Isolation relay contacts / fuses, supply 3mm creepage distance, test voltage= 4kV (power relay), 2kV (signal relay)

General data

Module operating temperature range -20°C to +55°C -20°C to +55°C
 Operating environment dry, clean, enclosed place, without reach of electrically non competent persons
 Max. wire cross section 4mm² (AWG12) 4mm² (AWG12)
 Module size L x W x H (from rail) approx. 63x93 x46mm approx. 63x93 x46mm

Order numbers:	power relay version	FM1C-4-24-6-60	FM1C-4-24-70-250
	power relay + load resistors	FM1CR-4-24-6-60	FM1CR-4-24-70-250
	signal relay version	FM1CL-4-24-6-60	FM1CL-4-24-70-250
	signal relay + load resistors	FM1CLR-4-24-6-60	FM1CLR-4-24-70-250
	Fuse cover, black (4 needed/ module)		FC1-B