

CPF pulse shapers

with the timing functions K, L and A are specialist devices for the lengthening or the limitation of control pulses.

In this fully electronic design with the facility for also connecting NAMUR sensors they are the ideal interface modules in modern control systems.

Always there where fast processes, high rotations, i.e. the briefest pulses, are to be evaluated, the cost-effective solution is:

CPF Pulse shapers.

CPF11

Single channel pulse shaper

- Input reversible (E-E)
- Input and output times separately settable
- 3 (6) functions to choose
- Additional free wheel diode 1A
- LED display for E and Q

Function → page 3



Settable times:

input pulse $\geq 1/5$ ms output pulse 5 ÷ 600 ms

CPF22

Double channel pulse shaper

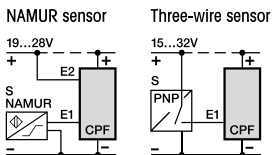
- Input/output galvanically isolated 4kV
- Input and output times separately settable
- 2 functions to choose
- LED output display for each channel

Function → page 3



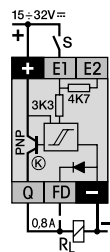
Settable times:

input pulse $\geq 0,5/2,5$ ms output pulse 50/200 ms



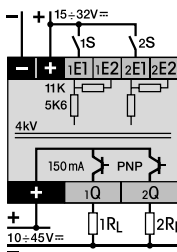
DC 10%

Ordering no. →



DC 24V

CPF11 / ...V



DC 24V

CPF22 / ...V

Example of order:
Pulse shaper CPF11/DC24V

