

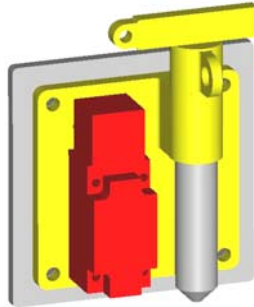


VORTECH AUTOMATION

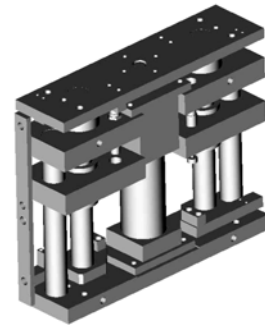
STANDARD PRODUCT LINE



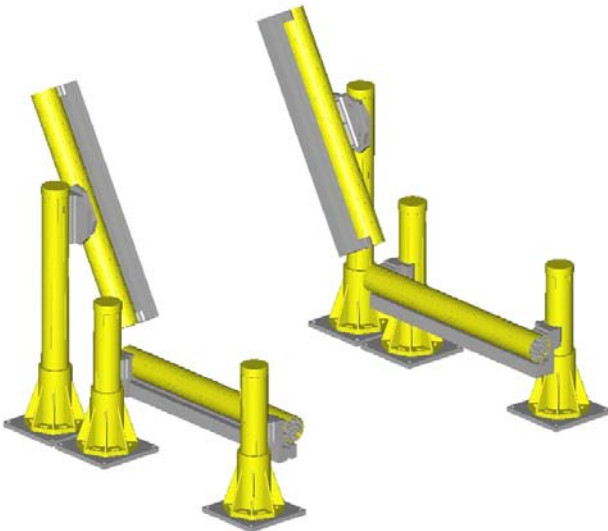
SCISSOR LIFTERS



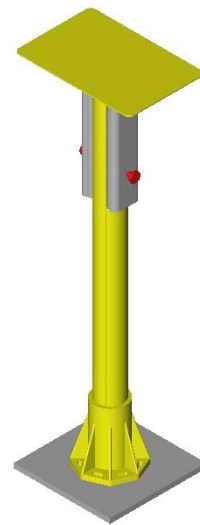
MACHINE LOCK-OUTS



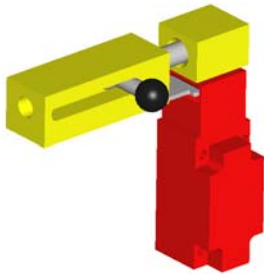
COMPACT LIFTERS



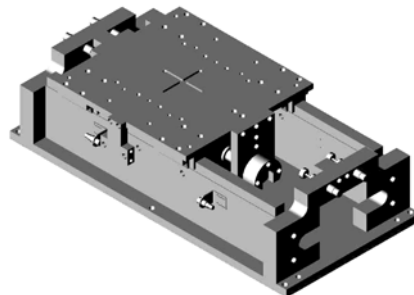
LIGHT SCREEN STANDS



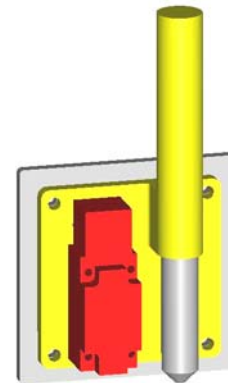
PALM BUTTON STANDS



GATE LOCK



SLIDES



MACHINE LOCK-OUTS

800-248-4875

PRODUCT INFORMATION

<p><u>COMPACT LIFTERS</u></p> <ul style="list-style-type: none">• LUBE FREE• SHOCKS IN BOTH DIRECTIONS• LOCKING CYLINDER• PROX BRACKETS & TRIPS• MANUAL LOCK-OUT• POSITIVE STOPS• ELECTRIC, HYDRAULIC, OR PNEUMATIC	<p><u>LOCK-OUTS</u></p> <ul style="list-style-type: none">• STANDARD ENVELOPE• DIFFERENT DIAMETERS & LENGTHS AVAILABLE• CHOICE OF SWITCH• INSULATED SADDLE / HANDLE• INTERLOCK OR SENSOR• PRE-WIRED• WELDED OR MECHANICALLY MOUNTED
<p><u>SLIDES</u></p> <ul style="list-style-type: none">• LUBE FREE• LOCKING & NON-LOCKING• LINEAR RAILS & BEARINGS• SHOCKS• MANUAL LOCK-OUT• MULTIPLE POSITION• PROX BRACKETS & TRIPS• STROKE ADJUSTMENT• ELECTRIC, HYDRAULIC, OR PNEUMATIC	<p><u>LIGHT SCREEN STANDS</u></p> <ul style="list-style-type: none">• 4 AXIS ADJUSTMENT• EASY SETUP / EASY REPLACEMENT• RIGID ROBUST DESIGN• ACCOMMODATES DIFFERENT LIGHT SCREEN MOUNTING• CONFORMS TO NAAMS STANDARD• STANDARD COMPONENTS
<p><u>SCISSOR LIFTERS</u></p> <ul style="list-style-type: none">• LUBE FREE• EXTREMELY RIGID• LINEAR RAILS & BEARINGS• ROLLER BEARING PIVOTS• ELECTRIC, HYDRAULIC, OR PNEUMATIC	<p><u>PALM BUTTON STANDS</u></p> <ul style="list-style-type: none">• ROBUST DESIGN• ADJUSTABLE HEIGHT• LIGHT WEIGHT• STANDARD COMPONENTS

<p><u>GATE LOCK</u></p> <ul style="list-style-type: none">• COMPACT• EASY ENGAGEMENT• ALLOWS EGRESS• PROTECTS INTERLOCK KEY• CHOICE OF SWITCH
--

vortechautomation@comcast.net

800-248-4875